

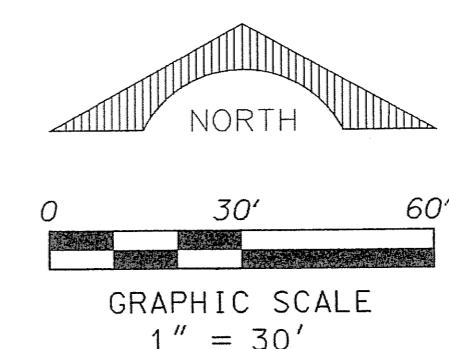
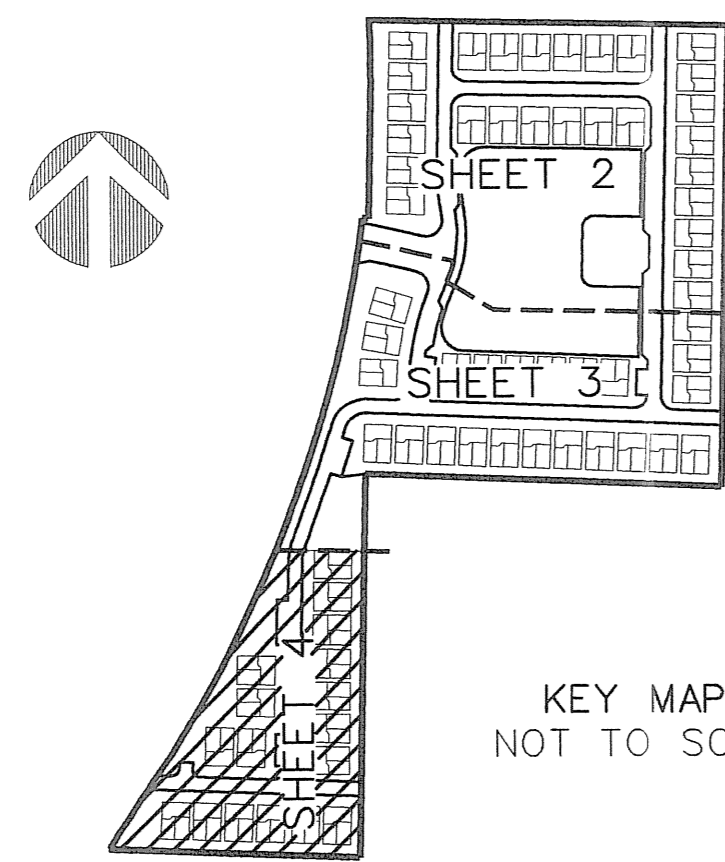
# PERIMETER

SURVEYING & MAPPING  
Certificate of Authorization No. LB7264  
Prepared by: Jeff S. Hodapp, P.S.M.  
951 Broken Sound Parkway, Suite 320  
Boca Raton, Florida 33487  
Tel: (561) 241-9988  
Fax: (561) 241-5182

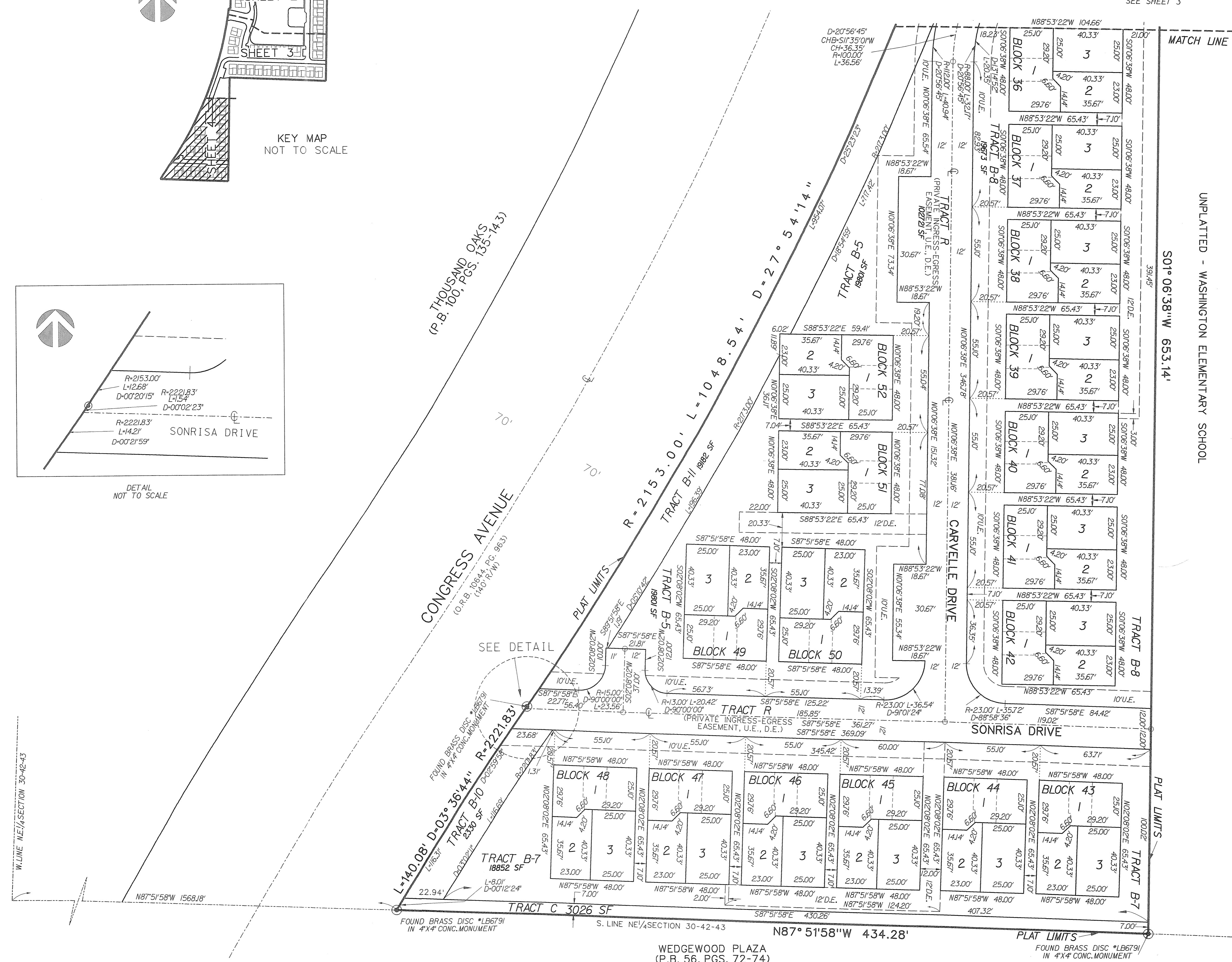
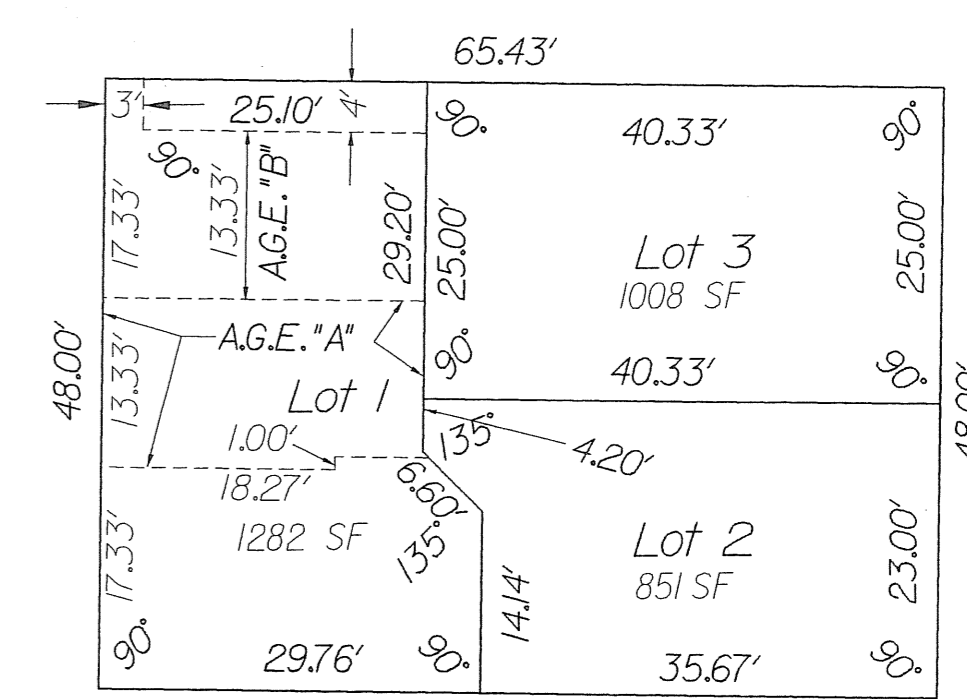
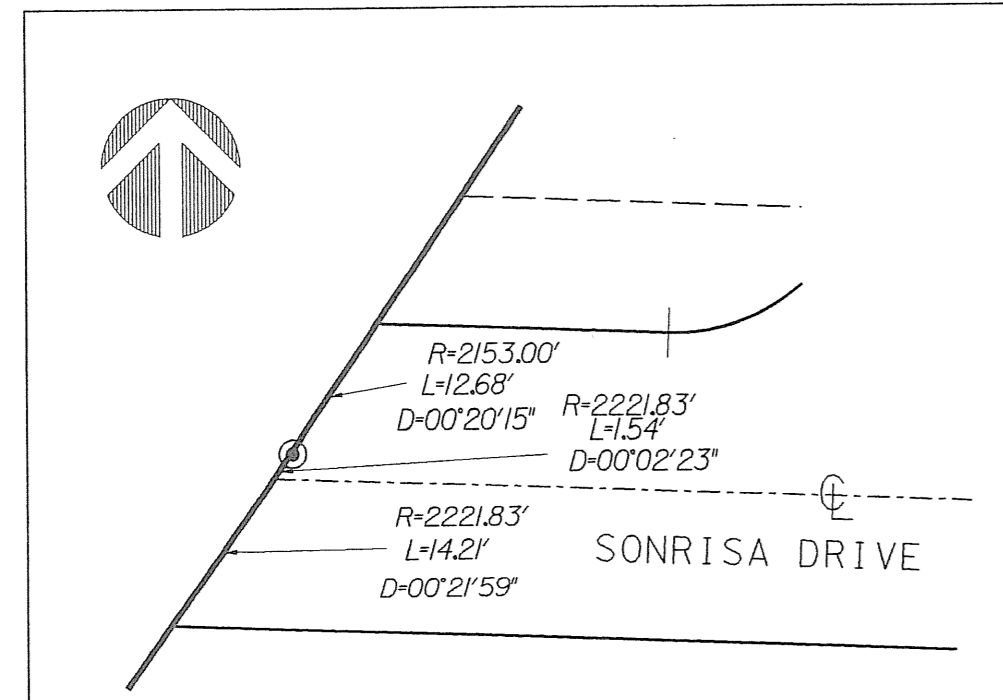
# SIERRA BAY REPLAT

A REPLAT OF PARCEL "B" AND LAKE PARCEL L-2, OF "SIERRA - SONOMA BAY"  
(P.B. 102, PGS. 149-152, P.B.C.R.) IN THE NORTHEAST ONE-QUARTER  
OF SECTION 30, TOWNSHIP 42 SOUTH, RANGE 43 EAST,  
CITY OF RIVIERA BEACH, PALM BEACH COUNTY, FLORIDA.  
JANUARY, 2005

99



SHEET 4 OF 4



- LEGEND:
- SET P.R.M. (UNLESS OTHERWISE NOTED) - 4" DIAMETER BRASS DISK IN CONC. MON. STAMPED LB7264 P.C.P.
  - A.G.E. ACCESS AND GARAGE EASEMENT
  - CH CHORD BEARING
  - CONC. CONCRETE
  - COR. CORNER
  - Δ DELTA (CENTRAL ANGLE)
  - D.E. DRAINAGE EASEMENT
  - I.R. IRON ROD
  - I.R.C. IRON ROD AND CAP
  - L. ARCLength
  - L.B. LICENSED BUSINESS
  - L.S. LICENSED SURVEYOR
  - L.M.E. LAKE MAINTENANCE EASEMENT
  - L.M.A.E. LAKE MAINTENANCE ACCESS EASEMENT
  - L.W.D.D. LAKE WORTH DRAINAGE DISTRICT MONUMENT
  - MON. MONUMENT
  - O.R.B. OFFICIAL RECORDS BOOK
  - N.R. NON-RADIAL
  - P.B. PLAT BOOK
  - P.B.C.R. PALM BEACH COUNTY RECORDS
  - P.C. PAGE
  - P.C.P. PERMANENT CONTROL POINT
  - P.O.B. POINT OF BEGINNING
  - P.O.C. POINT OF COMMENCEMENT
  - P.P.M. PERMANENT REFERENCE MONUMENT
  - P.S.M. PROFESSIONAL SURVEYOR & MAPPER
  - P.U.D. PLANNED UNIT DEVELOPMENT
  - R. RADIUS
  - R.R.E. ROOF ENCROACHMENT EASEMENT
  - R.O.W. RIGHT-OF-WAY
  - S. SECTION
  - S.F. SQUARE FEET
  - S.F.W.M.D. SOUTH FLORIDA WATER MANAGEMENT DISTRICT
  - U.E. UTILITY EASEMENT

WEDGEWOOD PLAZA  
(P.B. 56, PGS. 72-74)

UNPLATTED - WASHINGTON ELEMENTARY SCHOOL

501° 06' 38" W 653.141'

SEE SHEET 3

MATCH LINE

PLAT LIMITS

PLAT LIMITS

CONGRESS AVENUE  
(P.B. 100, PGS. 155-143)

CONGRESS AVENUE  
(O.R.B. 10644, PG. 963)

SEE DETAIL

FOUND BRASS DISC \*LB6791  
IN 4"X4" CONC. MONUMENT

FOUND BRASS DISC \*LB6791  
IN 4"X4" CONC. MONUMENT

S. LINE NE/4SECTION 30-42-43  
N87° 51' 58" W 434.28'

W. LINE NE/4SECTION 30-42-43